

GETTING STARTED



for Windows and the Mac



We at Interwrite Learning™ are proud of our family of Interwrite products. We strive to continue to bring you the best the technology has to offer. We urge you to visit our Web site, where we will post the latest information regarding any updates and changes we have made that would impact the instructions in this *Getting Started* document.

www.InterwriteLearning.com

Click on any of the Interwrite Learning products to access product information, software downloads, documentation, and training information.



Please recycle



Table of Contents

Interwrite Pads

About This Guide	5
Product Overview	5
Interwrite Pen	5
Bluetooth Technology	5
Workspace Software	5

Installation Overview

1. Unpack Your Interwrite Pad	6
2. Set Up Your Interwrite Pad and Interactive Pen	6
3. Install the Interwrite Workspace Software	6
4. Connect Your Interwrite Pad	6

Setting Up Your Interwrite Pad

Charging the Interwrite Pad and Interactive Pen	8
Attaching the Tether to the Pad and the Pen	8
The Electronic Interwrite Interactive Pen	9

Install the Interwrite Workspace Software

Installing the Interwrite Workspace Software on Windows	10
Installing the Interwrite Workspace Software on the Mac	11

Connect Your Interwrite Pad

Bluetooth™ Wireless Installation	12
About Bluetooth and Workspace	12
Bluetooth Requirements	13
Bluetooth Communications	13
Installing the USB Adapter	14
Keeping Track of the Bluetooth Adapter	14
Moving the Bluetooth Adapter	14

Connect the Interwrite Devices

Connecting a Wireless Device on Windows	15
Connecting a Wireless Device on the Mac	17

Operating the Interwrite Pad

Operating the Interwrite Pad	19
Operating the Buttons	20
The Sleep/Wake Button	20
The Connect Button	20
The Disconnect Button	21
Light and Tone Indicators	21
The Status Lights	21
The Power Status Light	21
The Connection Status Light	21
The Pad Battery Status Light	21
The Pen Battery Charging Status Light	22
Tone Indicators	22

Replacing the Battery Pack

Replacing the Interwrite Pad Battery Pack	23
---	----

Getting Started with Interwrite Workspace

Begin an Interwrite Workspace Session	26
The Interwrite Workspace Toolbar	27
Using the Pen Tool	28
Presentation Files	29
Distributing Presentation Files	30
Additional Interwrite Learning Resources	30
What is PRS?	30

Regulatory Statements and Warranty

Regulatory Statements	31
Warranty	39



Interwrite™ Pad

About This Guide

This *Getting Started* guide describes how to set up your Interwrite Pad and Interactive Pen, install the Interwrite Workspace software, and establish a communication connection with the PC or the Mac. It ends with an overview of the Interwrite Workspace software.

Product Overview

The Interwrite Pad is a tablet system featuring the patented digitizer and pen-input technology. Used with the Interwrite Workspace software on a PC or a Mac, Interwrite Pads allow you control the computer by running applications, opening and editing files, and annotating screen images and presentation files from anywhere in the room. When used with an Interwrite™ Board, Interwrite Pads provide the ultimate collaborative system for the interactive class room or the interactive meeting room.

Interwrite Pen

The electronic Interwrite Pen, when positioned just above (*in prox of*) or touching the surface of a powered-on, connected Pad, controls the movements of the mouse on the computer. The Pen becomes a writing and drawing instrument when one of the many Workspace Annotation Tools is selected from the projected Toolbar. When in Annotation Mode, a user can make notes on a PowerPoint Slide Show, highlight areas of interest on a spreadsheet, or edit a document using a wide range of pen attributes.

Bluetooth Technology

The Interwrite Workspace system uses the *Bluetooth™* wireless technology to establish communication between the Pad and the computer. The Interwrite Pads come with the Bluetooth module built into the Pad, so the only installation required is the Bluetooth USB Adapter on the computer.

Workspace Software

The operation of your Interwrite Pad is facilitated by the Interwrite Workspace software. The software is installed as part of the process of establishing communication between the Pad and the computer and is covered in this guide. The Workspace software has three operational modes: **Whiteboard Mode**, **Interactive Mode** and **Office Mode** (Windows only).



Interactive Mode, the operational mode used by both Interwrite Pads and Interwrite Boards, allows you to take advantage of the power and features of the Workspace software. An Interwrite Pad, acting as an input device to the computer, remotely controls the computer from anywhere in the room. When the Interwrite Board and a video projector are added, the computer's desktop image projects onto the Interwrite Board's surface, and the board, communicates as an input device to the computer.

In this environment, both the person at the Interwrite Board and users with Pads seated around the room can interact with the presentation. Office Mode makes it possible to interact directly with Microsoft's Office suite of products, PowerPoint, Word and Excel on the PC. Annotations, notes and calculations can be added directly to the native application files when in this operational Mode.

Installation Overview

This section describes what you will be doing and the order in which you will be doing it, to facilitate the setup of your Interwrite Pad and its preparation for use.

1. Unpack Your Interwrite Pad

The package includes the Interwrite Pad and the rechargeable Interwrite Interactive Pen, a Pen tether, a Pad Charger, and an Interwrite Learning™ CD and a Bluetooth USB Adapter.

2. Charge Your Interwrite Pad and Interactive Pen

Your Pad and Pen must be charged before you can use them. Place the Interactive Pen in the Pad's Pen Tray and plug the Pad Charger into the Charger Jack located at the top of the Pad and the other end into a standard wall socket. The Pad is charged when the Pad Battery Status Light goes off.

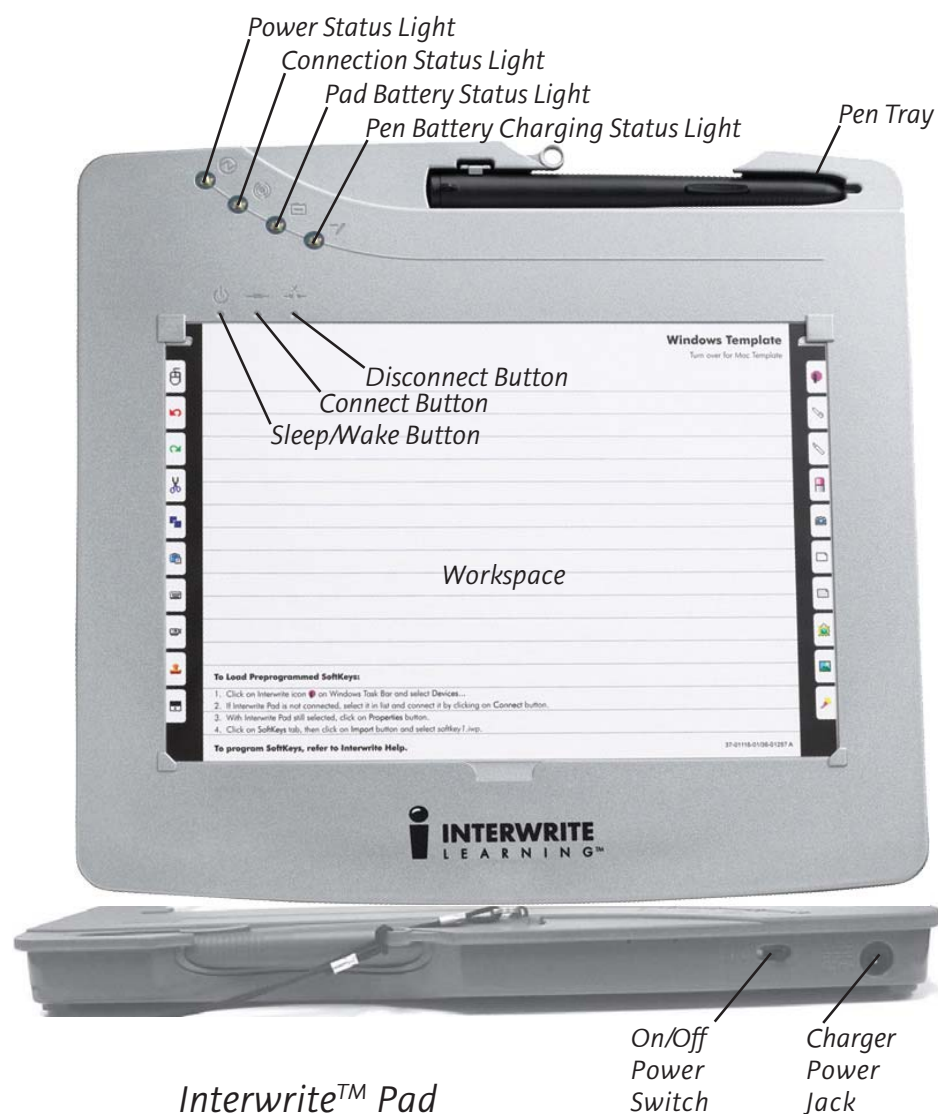
3. Install the Interwrite Workspace Software

4. Connect Your Interwrite Pad

Your Interwrite Pad must be able to communicate with the Interwrite Workspace software on your computer. This communication link is established wirelessly between two Bluetooth communication modules—one built into the Pad and the other connected to the computer. The wireless Bluetooth Pad must then be "connected" to Workspace by the Device Manager, one of the Interwrite Workspace software applications.

Setting Up Your Interwrite Pad

The Interwrite Pad communicates with the computer using Bluetooth™ wireless technology. The Bluetooth communications module is built into the Interwrite Pad. The Pad communicates through its built-in Bluetooth module with another Bluetooth module installed on the computer. The Interwrite Pad runs on Nickel Metal Hydride batteries, which provide about 40 hours of wireless operation before they have to be recharged.



Note

The first thing you should do when you unpack your new Interwrite Pad and Interactive Pen is charge them.

Charging the Interwrite Pad and Interactive Pen

Before you use your Interwrite Pad and Interactive Pen for the first time, they should be charged for about three hours, or until the **Pad Battery Status Light** goes off. Whenever the Pad battery is low and needs to be recharged, the Pad Battery Status Light will flash slowly.

- 1 Place the Interactive Pen in the **Pen Tray** with the **Rocker Button** and **Tether Loop** facing up.
- 2 Connect the Pad Charger's cable to the **Charger Power Jack** at the top of the Pad.
- 3 Plug the Charger into an AC power outlet.

The Interwrite Pad can be used while it is charging.

- 4 When the Pad and Pen are charged and the **Pad Battery Status Light** goes out, unplug the Charger from the Interwrite Pad.
- 5 Turn on the **Power Switch** when the Interwrite Pad is charged.

The buttons and status lights are described in more detail in the *Operating the Interwrite Pad* section beginning on page 20.

Note

The Pen can be charged only when it is placed in the Pen Tray on the Pad, and only when the Pad is being charged. A Pen charge lasts over 40 hours. You should always charge the Pen when the Pad is being charged.

Attaching the Tether to the Pad and the Pen

The tether has a loop at each end. One end has a metal ring attached to the loop – that's the Pen loop. The other end is the Pad loop.

- 1 Thread the Pad loop up through the hole above the Pen Tray. Thread the Pen loop through the Pad loop. Pull to tighten.
- 2 Thread the metal ring through the Tether Loop eyelet on the Pen.

The Electronic Interwrite Interactive Pen

The Interactive Pen is an input device to the computer. You will use it to write and draw in Annotation Mode and to control mouse movements in Mouse Mode by moving the tip of the Pen just above (*in prox of*) or touching the Pad's **workspace** surface. When the Pen Tip is in prox or touching the Pad's workspace, it simulates the same effects you would get using the left mouse button both in Windows and on the Mac.

Using the Pen

When the Pen is in prox, press the left end of the Rocker Button to simulate a left mouse button double-click in Windows and on the Mac. Press the right end of the Rocker Button to simulate a right mouse button click in Windows and a Ctrl-click on the Mac. In Windows, hold down the left Rocker Button and touch the Pen Tip to the Pad's workspace to erase. On the Mac, with the Pen Tip touching the Pad's surface, hold down the left Rocker Button to erase.

Sleep Mode

The Pen goes into *Sleep Mode* after about two minutes of inactivity to conserve power. Touching the Pen to a surface, or clicking one of its Rocker Buttons, wakes up the Pen. When the Pen is *in prox*, the **Power Status Light** on the Pad will go from flashing to solid green. It goes back to flashing green when the Pen is *out of prox*.



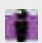
Installing the Interwrite Workspace Software on Windows

The Interwrite Workspace software must be installed on Windows by a user with *Administrator* privileges. Interwrite Workspace is compatible with Windows 2000, XP, and Vista.


Note

If you are using Windows 98/Me/NT, you must use Interwrite Workspace version 5.0. For more information, contact Technical Support to order an installation CD.

- 1 Log in as *Administrator*. Insert the Interwrite Learning CD into the CD drive on your PC. The installer will autoload. If it doesn't, click on the **Start** button on the Windows Task Bar and select *Run* from the menu. Type `X:\setup.exe` (X represents the CD drive letter).
- 2 Select the *Install Interwrite Workspace Software* menu option.
- 3 Follow the onscreen instructions for the software installation. You will know Interwrite Workspace has installed successfully by the appearance of the Interwrite Workspace icon in the System Tray on the Windows Task Bar. If the icon does not appear, restart your computer.

The Interwrite Workspace icon  on the Task Bar indicates that the Interwrite **Device Manager** is now running on your PC. Click on the Workspace icon to display the options on the Device Manager Menu shown here. Device Manager, in addition to managing the Interwrite hardware devices, provides direct access to the three operational modes of the Interwrite Workspace software.

**Note**

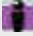
Click the Interwrite Workspace icon  in the System Tray of the Windows Task Bar to display the Device Manager Menu. Select the *Check for Updates* option. If a new version of Workspace is available, download it now. You should periodically check for updates.

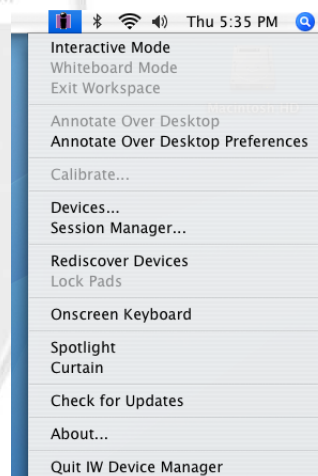
Installing the Interwrite Workspace Software on the Mac

Interwrite Workspace must be installed on the Mac by a user with *Admin* privileges. Interwrite is compatible with Mac OS X version 10.4 or higher.


- 1 Insert the Interwrite Learning CD into the CD-ROM drive on your Mac. An Interwrite Workspace CD icon will appear on your desktop.
- 2 Double-click on the Interwrite icon on the desktop to display the CD's contents. Double-click on the **Install Interwrite** icon.
- 3 Follow the onscreen instructions for the software installation.

January 2007
11-00123-01 Rev A
©2007 Interwrite Learning™

The appearance of the Interwrite Workspace icon  on the Menubar indicates that the **Device Manager** is now running on your Mac. It will load and run in the background every time you start up your Mac. Click on the Interwrite Workspace icon to display the options on the Device Manager Menu, shown here. Device Manager, in addition to managing the Interwrite hardware devices, provides direct access to the two operational modes of Interwrite Workspace on the Mac.



Note

Click the Interwrite Workspace icon  on the Menubar to display the Device Manager Menu. Select the **Check for Updates** option. If a new version of Interwrite Workspace is available, download it now. You should periodically check for updates.

Connect Your Interwrite Pad *Bluetooth™* Wireless Installation

This section of the *Interwrite Pad Getting Started* guide describes how to

- ◆ connect the Bluetooth USB Adapter to the computer
- ◆ establish communication between the Bluetooth modules using the Interwrite Workspace software.



About Bluetooth and Workspace

The Interwrite Workspace system employs *Bluetooth™* wireless technology to establish wireless communication between the Interwrite Boards and Interwrite Pads and the computer. A **Bluetooth Module** must be installed on each component involved in wireless communication. The **Bluetooth BTCOM2 Module** is installed on the Interwrite Board. The **Bluetooth USB Adapter** shown here is installed on the computer, if necessary. The Interwrite Pads have the Bluetooth Module built in, so no installation is necessary.



Bluetooth Requirements

If the computer has the Bluetooth Module built in, an external module is not needed. Most computers with a built-in Bluetooth Module will also have the Bluetooth driver software installed. Version 6.xx of the InterWrite software and version 7.0 of the new Interwrite Workspace software support the three most common Bluetooth stacks (driver software)—Toshiba, WIDCOM and Microsoft.



Windows XP with Service Pack 2, Windows Vista and Mac OS X version 10.4 or above have built-in Bluetooth support. If you are using Windows 98/2000/Me/NT, contact Technical Support to order an installation Kit.


Bluetooth Communications

The Interwrite Board and Interwrite Pads in an Interwrite wireless system communicate with the computer through a single Bluetooth Module connected to the computer. Up to seven Bluetooth-enabled Interwrite Devices—Boards and Pads—can communicate with the Bluetooth Module connected to the computer. Only one Bluetooth Module, either built-in or external, can be connected to the computer at a time.



Interwrite Model 100 Pads are the only Pads that have a cable that connects the Pad to the computer. Interwrite Model 300, 310 and 400 Pads are wireless. You can have a mix of wired and wireless Interwrite Pads and Interwrite Boards communicating with the computer.

Installing the USB Adapter

Plug the USB Adapter into one end of the USB cable and insert the other end into one of the USB ports  on your computer.

It cannot be plugged into a keyboard USB port on the Mac. The operating system will auto-detect and configure the new hardware device.



Keeping Track of the Bluetooth Adapter

The Velcro button in your Bluetooth Comm Kit is used to attach the USB Adapter to the side of your monitor, or to the lid of your laptop. Pull the button apart, remove the paper backing from both pieces, and stick one piece to the back of the USB Adapter and the other to the monitor or laptop lid. Use a USB extension cable to connect to the USB port.



Note

Do not install the USB Adapter behind metal enclosures, as this will limit performance. Metal serves as a shield and reduces the signal strength. Mount the Adapter so the top of the unit is positioned above the computer or monitor case. Use a USB cable extender when additional length is needed to mount the USB Adapter away from metal or other enclosures.

Moving the Bluetooth Adapter to Another Machine or USB Port

The Adapter-to-USB-port and Bluetooth software installation (Windows only) must be performed by a user with *Administrator* privileges. If the configuration is changed, that is, if the Adapter is moved to another USB port on the computer, or if a different USB Adapter is installed in the USB port on that computer, the process must be managed by the *Admin*.

Connect the Interwrite Devices


The Interwrite Workspace software component **Device Manager** is the driver for the *Interwrite Devices*—Interwrite Boards, Interwrite Pads and the Interwrite Panel. Device Manager is loaded when Interwrite Workspace is successfully installed on the computer. It automatically detects a cabled Interwrite Board or Interwrite Panel. However, the wireless Interwrite Devices need to be *discovered* – and, in the case of the Mac, to *select a Service* – before the communication connection is complete.

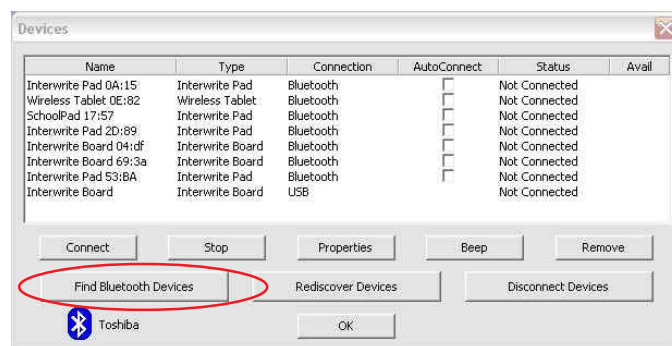
The following sections describe how to connect wireless Interwrite Devices, first on Windows, then on the Mac.

Connecting a Wireless Device on Windows


The last step in setting up wireless communications between the Bluetooth modules on the Interwrite Pad and your PC is performed by **Device Manager**. Make sure the Interwrite Pad is powered on.



- 1 Click on the Interwrite Workspace icon  in the System Tray on the Windows Task Bar to display the **Device Manager** menu.
- 2 Select the *Devices...* menu option.

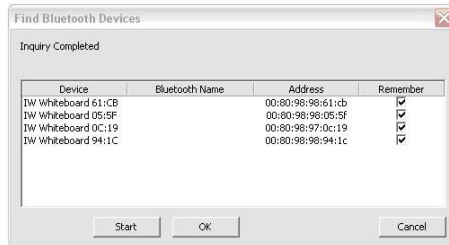


The **Devices** dialog box with the Bluetooth icon is displayed.

The icon is red  when the Bluetooth module is not connected to the PC.

- 3 Click on the **Find Bluetooth Devices** button.

A search inquiry for all Bluetooth Devices will begin automatically. When the inquiry is completed, all Devices discovered during the search will be listed in the **Find Bluetooth Devices** dialog.

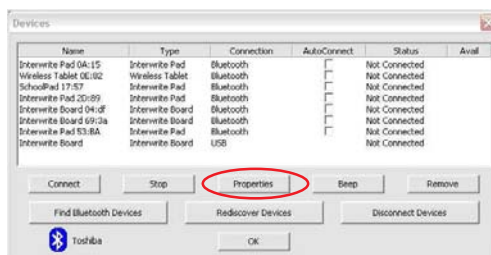


4 Click on the *Remember* checkbox next to each discovered Device you want to see listed in the **Devices** List Window.

5 Click **OK** to return to the **Devices** dialog.

The Interwrite Device Addresses shown here are the *Radio IDs* and can be found on the back of the Interwrite Device.

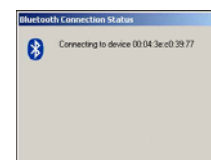
Each discovered device is identified in the Devices dialog by its *Name*, *Type*, *Connection*, *Status*, *Availability*, and whether *AutoConnect* is enabled. The



Properties feature allows you to give a connected Interwrite Device the Name shown in the Devices List Window (the Interwrite Pad is given an additional **Bluetooth Name**) and to program its **SoftKeys**.

AutoConnect is a property unique to Bluetooth-enabled Interwrite

Devices. When AutoConnect is enabled, the computer will scan continuously for this and other active, AutoConnect-enabled Bluetooth Devices and attempt to connect them. Scanning stops once a Device is detected and connected. Therefore, if you are connecting multiple Devices, make sure they are all powered on, so all of the Devices will be detected by the scan. The *Status* property will tell you whether the connection succeeded or failed. The *Availability* option indicates that a discovered Device is available for connection. The **Connect** button can be used to manually connect discovered devices.




6 If you want your Interwrite Pad to AutoConnect when it is powered on, click on the *AutoConnect* checkbox.

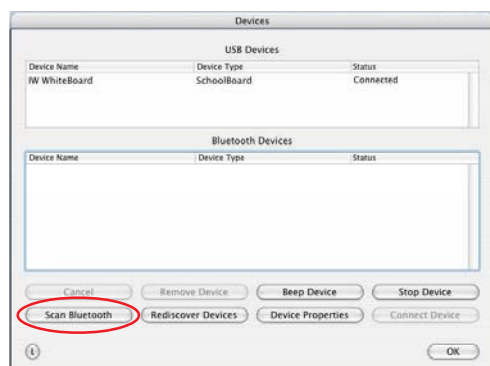
7 Select your Interwrite Pad in the Devices List Window and click on the **Properties** button. Give the Pad a **Name**. This Name is stored in the Interwrite Workspace software on this computer and will identify the Pad when it is connected to this computer.

Once connected, your Interwrite Pad is available as a system pointing device. Your computer mouse can still be used as a pointing device.

Connecting a Wireless Device on the Mac

The last step in setting up wireless communications between your Bluetooth Interwrite Devices is performed by **Device Manager**. Make sure your Interwrite Pad is powered on.

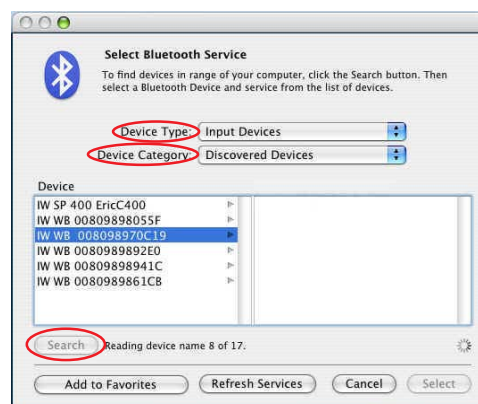
- 1 Click on the Interwrite Workspace icon  on the Mac Menubar to display the **Device Manager Menu**.
- 2 Select the **Devices...** menu option.
The **Devices** dialog box is displayed.



- 3 Click on the **Scan Bluetooth** button.

The **Select Bluetooth Device** dialog box is displayed.

- 4 Make sure the **Device Type** is set to *Input Devices* and the **Device Category** is set to *Discovered Devices*.



- 5 Click on the **Search** button.

Every active Interwrite Board and Interwrite Pad running Bluetooth should be discovered and listed in the left column of the **Select Bluetooth Service** dialog box.

18 Interwrite™ Pad

Getting Started

Select the Device in the left column. A Service displays in the right column. Interwrite Bluetooth Devices—Interwrite Boards and Interwrite Pads—will use either the **ZV-AT** Service or **InterWrite** Service.

7 Click on the Service displayed in the right column. When you do, the Select button is activated.

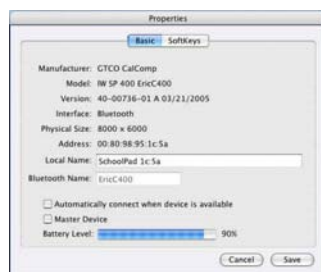
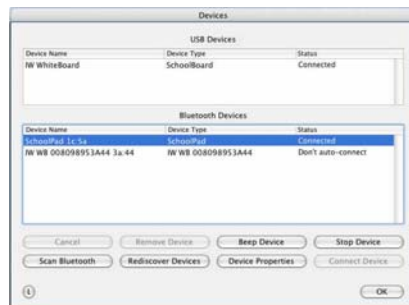
8 Click on the **Select** button.



The Bluetooth dialog box goes away. The Interwrite Pad beeps once when it is connected.

Note

If the Device doesn't connect, repeat the process—click on the Device, click on the Service, click the Select button.



Your Interwrite Pad is now listed in the Bluetooth Devices section of the Devices dialog with **Status Connected**. By default, the Pad will automatically reconnect in the future. If you want to change that, select your Interwrite Pad, click on the **Device Properties** button and clear the *Automatically connect when device is available* checkbox.

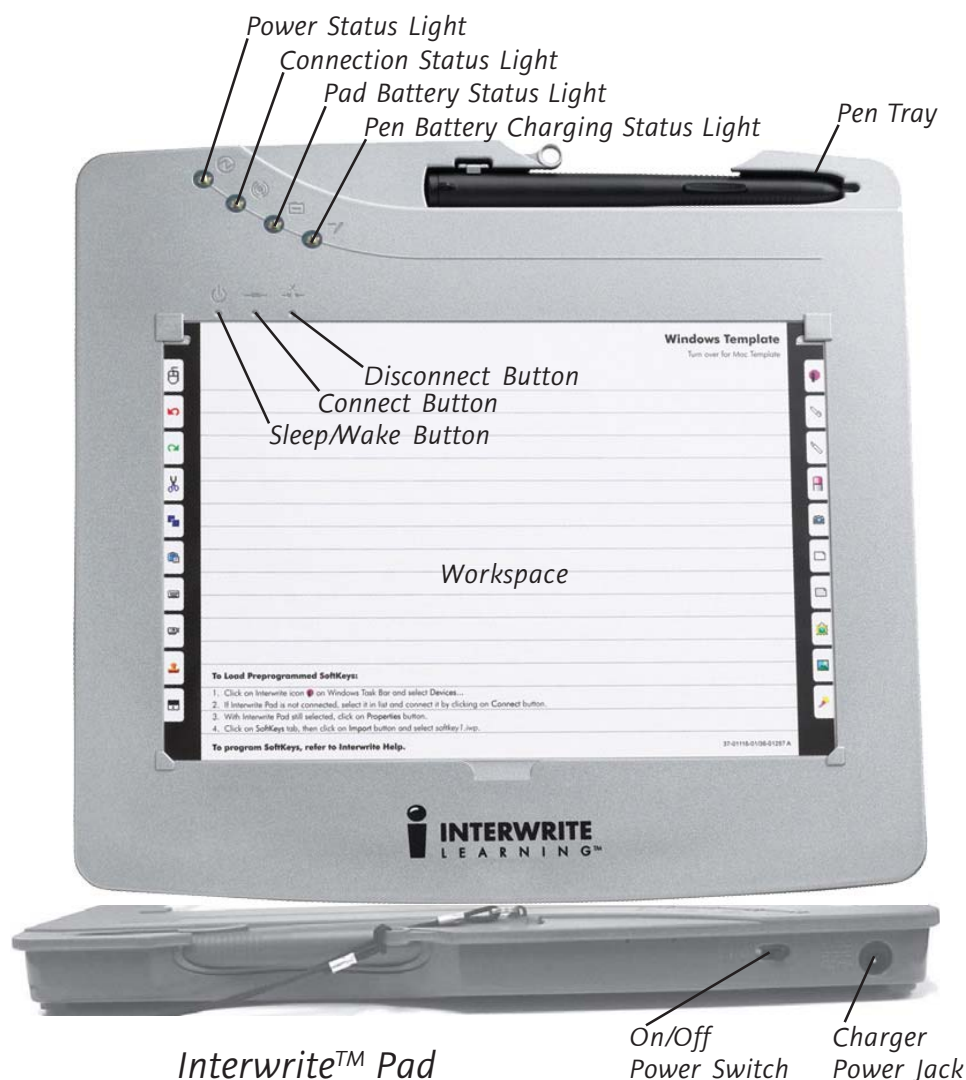
If you turn off your Pad and power it on during the current session, Device Manager will detect that the device has gone away and will change its status to *Disconnected*. Click on the **Connect Device** button to reconnect.

Tip: Give each Interwrite Device a **Local Name** so it will be distinguishable in the Bluetooth Devices list box.

Operating the Interwrite Pad

The Interwrite Pad provides the freedom to interact with a projected presentation from anywhere in the room. You can write annotations and run applications remotely, giving you the opportunity to engage others and encourage participation.

You use the electronic Interactive Pen on the Interwrite Pad's workspace, the area defined by the Pad Insert, to move the mouse cursor on the projected image, to select and use Workspace tools, and to click on the programmable SoftKeys indicated along the sides of the Pad Insert. The Pen is also used to press the indented buttons just above the workspace area.





Operating the Buttons

To operate any of the three buttons, position the Pen vertically above the button and touch the Pen Tip to the button and hold for several seconds.

The Sleep/Wake Button

The Sleep/Wake Button allows you to put your Interwrite Pad into *Sleep Mode* at any time. Sleep Mode conserves the battery charge. The Pad drops the connection and goes into an energy-saving standby mode. The Pad will automatically go into Sleep Mode after a half hour to an hour of inactivity. This button is also used to wake up the Interwrite Pad from Sleep Mode, returning it to full operating power.

The Connect Button

The Connect Button wakes up an Interwrite Pad that is in Sleep Mode and attempts to connect, or reconnect, the powered-on, discovered Pad.

How it Works in Windows

The Interwrite Pad is *discovered* when the signal sent from the Bluetooth device installed on the computer is answered by the Pad. An exchange of device addresses takes place. Device Manager displays the Pad's address in the Pad's **Properties** profile. The Pad stores the computer's Bluetooth address. The computer – or more accurately, the Bluetooth device on the computer – and the Pad are now *linked*. If the Pad becomes disconnected, or is powered off, pressing the **Connect** button on the Pad will turn it on and reconnect it to the computer with the Bluetooth device that discovered it.

If you were to take the Interwrite Pad to another location, say another classroom, where a different computer and Bluetooth device are set up, your Pad would not be able to communicate with the second computer until the second computer *discovers* the Pad. The **AutoConnect** setting for your Pad determines whether your Pad stays linked to the first computer, or whether it becomes linked to the second computer. A link between the Bluetooth devices on the computer and your Pad occurs only when the AutoConnect option for the Pad is checked. That's when the computer's Bluetooth device address is stored as the **Host Address** on the Pad and the link is created.

If you wanted to establish a new link between your Pad and the second computer, check the AutoConnect setting. The second computer's Bluetooth device address will overwrite the value currently stored in the Host Address field on the Pad. However, if you want to retain the link between your Pad and the first computer, keep the AutoConnect setting unchecked. In this way, the connection to the second computer is a temporary one, for this session only. If the Pad becomes disconnected, it must be connected by clicking on the **Connect** button to continue communicating in the current session.



How it Works on the Mac

The Interwrite Pad is *discovered* when the signal sent from the Bluetooth device installed on the Mac is answered by the Pad's Bluetooth device. An exchange of device addresses takes place. Device Manager displays the Pad's address in the Pad's **Properties** profile. The Pad's Bluetooth device stores the Mac's Bluetooth address. The Mac – or more correctly, the Bluetooth device on the Mac – and the Pad are now *linked*. If the Pad becomes disconnected, is powered off, or is asleep (in Sleep Mode), pressing the **Connect** button on the Pad will turn it on and reconnect it to the Mac that discovered it.

If you were to take your Pad to another location with a different Mac and Bluetooth device, it would not be able to link to this new Mac. It has to be *discovered* by the new Mac. Be aware, though, that when your Pad is discovered by the second Mac, it will lose its link to the first one.

The Disconnect Button

The Disconnect Button breaks the connection between the Pad and the computer. It does not put the Pad into Sleep Mode, nor does it power off the Pad.

Light and Tone Indicators

The Status Lights

The four Status Lights across the top of the Pad to the left of the Pen Tray indicate the status of various aspects of Pad and Pen operation. They may take several seconds to light up and display their status.

The Power Status Light

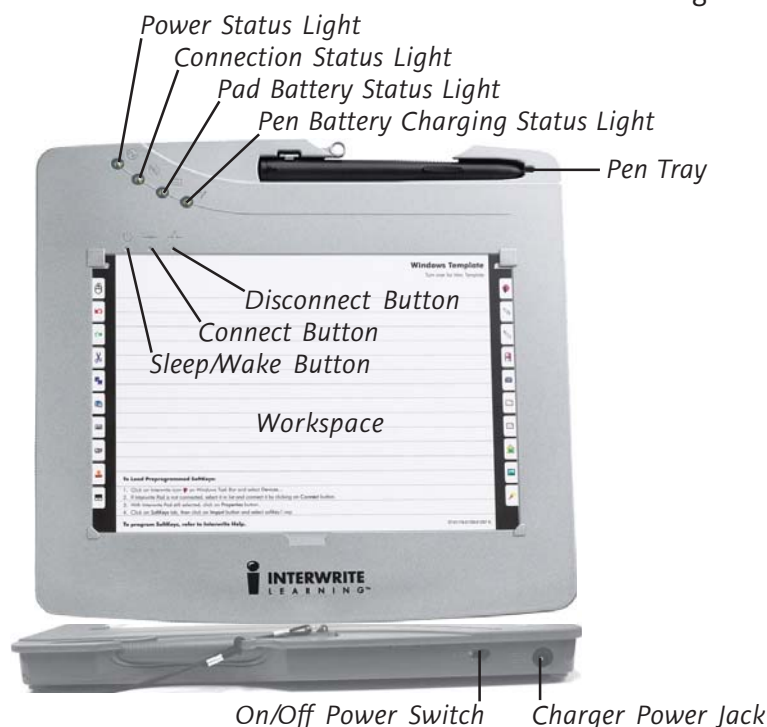
The green **Power Status Light**, the status light on the far left, flashes when the Pad is on and the electronic Pen is not *in prox* (just above the Pad's workspace surface). It is solid green when the Pen (or another Interwrite Learning pointing device) is *in prox* or touching the Pad's workspace surface. When the Pad is powered off or in Sleep Mode, the Power Status Light is off.

The Connection Status Light

The **Connection Status Light** flashes when the Pad connects, disconnects, or beeps. Otherwise, it is not on.

The Pad Battery Status Light

The **Pad Battery Status Light** is on only while the Pad is plugged in for charging. It turns off when the Pad is fully charged and remains off during normal Pad operation. When the Pad battery is low and needs to be recharged, the Pad Battery Status Light will slowly flash.



The Pen Battery Charging Status Light

The Interactive Pen should always be charged when the Pad is being charged. The **Pen Battery Charging Status Light** turn on for 10 seconds when the Pen is properly seated – Rocker Button facing up – in the Pen Tray (and the Pad Charger is plugged in to the Pad). The Pen Battery Charging Status Light remains on only when the Pad Charger is plugged into the Pad and the Pen is charging. The Pen Battery Charging Status Light turns off when the Pen is fully charged, or when the Pad Charger has been disconnected from the Pad.

Tone Indicators

The Pad emits four high frequency beeps when it powers on. When it connects with the computer, you will hear a rising tone. When it goes into Sleep Mode or disconnects, you will hear a descending tone.

When you press the Connect Button to reconnect your Pad, you will hear a clicking tone until the connection link either succeeds, which is indicated by the rising Connect tone, or fails, which is indicated by the low frequency Error tone. If the Pad is already linked to a computer and you press the Connect Button, you will hear one high frequency beep. During charging, if the Pen is positioned incorrectly in the Pen Tray, a long, continuous tone will sound until the Pen is properly positioned.

You will hear a click when you touch a SoftKey with the Pen and the Connection Status Light will flash. If you program a SoftKey to beep, you will hear the beep when the function assigned to the SoftKey is executed.

Replacing the Interwrite Pad Battery Pack

The Interwrite Pad’s battery pack is accessed from the back of the Pad.

Tools Required:

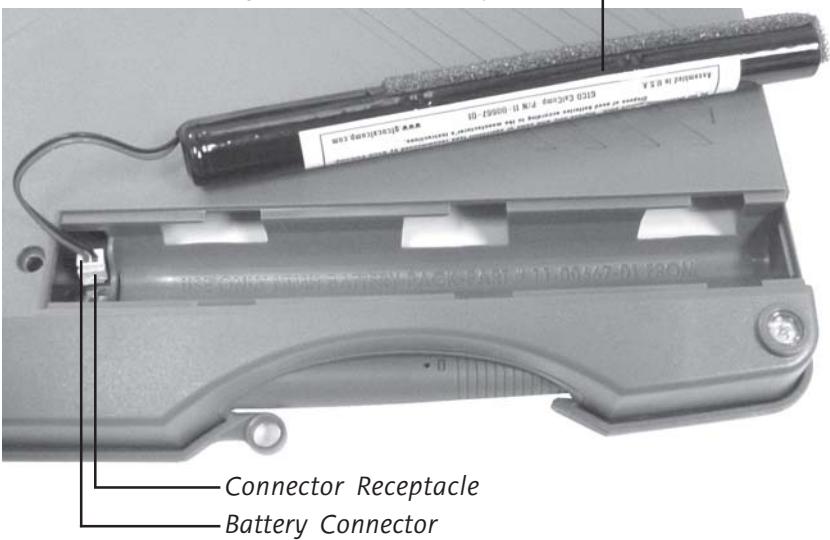


Small Phillips screwdriver

Back View of Pad



Interwrite Learning Rechargeable NiMH Battery Pack





Replacing the Interwrite Pad Battery Pack

(cont.)

- 1 Turn your Interwrite Pad over and use a small Phillips screwdriver to remove the screw holding the **Battery Cover** in place.
- 2 Push down on the **Thumb Grip** and slide the Battery Cover away from the screw hole.
- 3 Lift the **Battery Pack** out of the compartment, being careful not to pull too hard on the battery lead wires to the Connector.
- 4 Locate the white **Battery Connector** plugged into the **Connector Receptacle**. The Connector has a small bump that snaps into the hole on the side of the Connector Receptacle to hold the Connector in place. On some Connectors this is a tight fit, while on others it is not.
- 5 First, try using the Connector wires to *gently* pull the Connector straight up and out of the Receptacle. If you feel any resistance, stop this action.
- 6 If there is resistance, it's probable the bump needs to be released from the hole in the Receptacle. Use a fingernail, a thin-bladed screwdriver, a letter opener—any instrument that can be used to slightly bow out the wall of the Connector Receptacle, so the Connector bump is clear of the hole. If you can, grasp the edges of the Battery Connector with your fingers. Otherwise, use the wires to gently pull the Battery Connector straight up and out of the Receptacle.
- 7 Discard the old Battery Pack, following the proper disposal procedures.
- 8 With the small bump on the new Battery Pack Connector facing the top of the Pad, plug the Connector into the Receptacle, gently pushing down until you feel it snap into place.
- 9 Feed the lead wires into the open space under the screw hole and set the Battery Pack into the compartment with the foam side facing up.
- 10 Fit the Battery Cover into the grooves and slide it back into place.
- 11 Replace the screw.



Getting Started with Interwrite Workspace

The purpose of this document is to give you a feel for the Interwrite system by showing you how to select and use a tool in Interactive Mode. The Annotation Tools of Interactive Mode consist of freehand tools, text tools and drawing tools. Of the freehand tools, the Pen tool is the most frequently used Interwrite Workspace Tool. The following pages describe how to select and configure the Pen tool.

The Interwrite system is at the heart of a successful interactive collaboration, whether it is in a classroom of fourth graders studying world geography, or in a boardroom of corporate executives brainstorming a new product launch. All the tools you will need to stimulate inspiration, connection and participation can be found in the Interwrite Workspace software. Here's a quick look at the Workspace basics to get you started.

Workspace Modes

Interwrite Workspace is run in one of three operational modes, **Interactive Mode**, **Office Mode** (Windows only), or **Whiteboard Mode**.

Workspace Tools have been categorized as Annotation Tools, Editing Tools, Page Tools, Presentation Tools, Multimedia Tools, Navigation Tools, File Management Tools, and Setup Tools. The Interwrite Workspace Help file describes all these tools in detail and can be accessed from the Device Manager Menu.

Whiteboard

Whiteboard Mode, available only when using an Interwrite Board with Workspace, allows you to capture and preserve notes, drawings, calculations—whatever you write on the Interwrite Board with an Interwrite Marker Pen.


Office

Office Mode makes it possible to interact directly with the native files of the Microsoft Office suite of products, PowerPoint, Word and Excel.

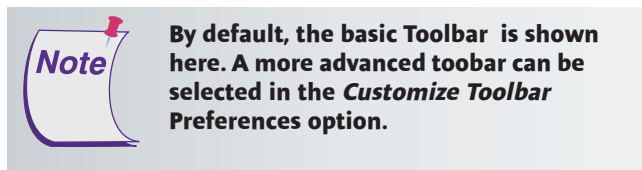
Interactive

Interactive Mode allows you to open and run applications while in **Mouse Mode**, using the tip of your electronic Interwrite Pen on the Interwrite Panel screen to move the cursor. In **Annotation Mode**, you use the Interwrite Pen to select Interwrite Workspace Tools from the Toolbar.
















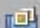







Begin an Interwrite Workspace Session

- 1 When you are ready to begin an Interwrite Workspace session, turn on your Interwrite Panel. The Panel must be active and connected. You can verify this in *Session Manager*, or *Devices*, both **Device Manager Menu** options.
- 2 You can start Workspace in Interactive Mode by using your electronic Interwrite Pen to click on the Interwrite Workspace icon  on the Windows Task Bar or the Mac's Menubar to display the **Device Manager Menu**. Select *Interactive Mode* from the menu.

The Workspace Toolbar displays on the screen.



The Interwrite Workspace Toolbar

<i>Minimize Toolbar</i>		
<i>Workspace Menu</i>		
<i>Mouse Mode tool</i>		
<i>Selection tool</i>		When you start up Interwrite Workspace in Interactive Mode, the Toolbar displays, along the right side of the projected desktop image. At that time, Workspace is in <i>Mouse Mode</i> .
<i>Pen tool</i>		
<i>Highlighter tool</i>		
<i>Eraser tool</i>		
<i>Shape tool</i>		Use your Interwrite Pen to select the Pen tool from the Toolbar. Select a capture option from the Capture dialog, click on the window, or click and drag to capture a portion of the screen.
<i>Line tool</i>		
<i>Text tool</i>		
<i>Undo Previous Action</i>		
<i>Clear</i>		
<i>Create Blank Page</i>		Your capture is displayed in the <i>Annotation Window</i> . Or, you can start up Annotation Mode by selecting one of the Page Creation Tools.
<i>Create Grid Page</i>		
<i>Gallery tool</i>		
<i>Screen Capture tool</i>		
<i>Previous Page</i>		The page type you select is displayed in the Annotation Window and the Pen tool is automatically selected.
<i>Next Page</i>		
<i>Page Sorter tool</i>		
<i>Save</i>		Once the Annotation Window is open, you can begin writing or drawing on the page.
<i>Toolbox</i>		
<i>PRS tool</i>		
<i>Exit</i>		

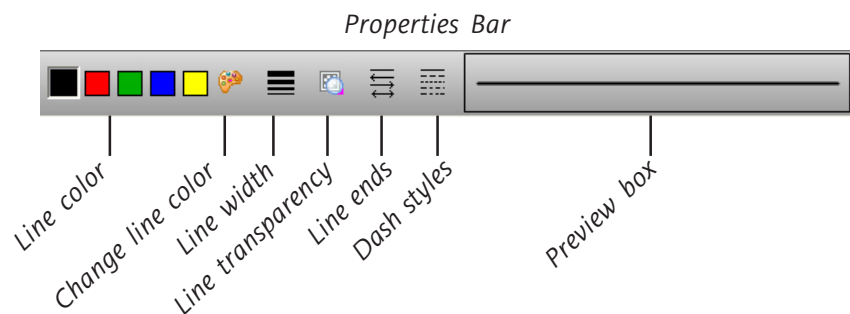
Using the Pen Tool

The attributes of the Pen tool can be changed by selecting different options from the Properties Bar at the bottom of the Annotation Window.

Select the Pen tool's Down Arrow to display its Tool Settings Menu.

Properties Bar

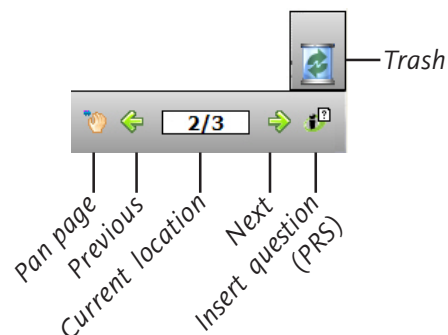
The Pen tool Properties Bar provides options to change line color, width, transparency, and line ends and line styles. Each attribute change is displayed in the Preview Box.



Change the Pen tool's line color and width to determine how it will affect the look of your annotations. The best way to familiarize yourself with all the different Interwrite Workspace tools and how they can be used to enhance your presentations is to experiment with them.

Page Functions

Workspace also provides the ability to move within pages within the window. Select the functions at the bottom of the screen to pan a page, move between pages, use the PRS tool (optional), or discard annotations.





Presentation Files

The presentation file is made up of your annotated pages. The Page Creation and Capture tools are used to create the pages in the presentation file and the Annotation Tools are used to create the annotations. The presentation file is automatically saved as a .GWB file.

As soon as Interwrite Workspace goes into Annotation Mode, an untitled presentation file is created. Unless you give the file a name, it is automatically saved using today's date as the filename. (Multiple files created today have 01, 02, 03, etc., appended to the date name.)

An existing presentation file can be opened, its pages can be sorted, annotations can be added to the existing pages, and new pages can be added to the file. Your presentation will determine how each presentation file evolves.

For example, you can prepare a presentation file of blank maps ahead of time for a geography lesson. Or, you can capture and annotate each of the monthly earnings spreadsheets as you review the past fiscal year during a budget meeting. Or, you can run a PowerPoint Slide Show in **Office Mode** (Windows only) and annotations can be added to each slide and saved in the native file.

Building the Presentation File

You can build your presentation file during your presentation, or you can pre-build it, including the screen captures, images, graphs and text pages you want to present. However you choose to do it, the process is the same.

To capture a screen or window, click on the **Mouse Mode** tool with your Interactive Pen and arrange the desktop for capture. Select an Annotation Tool, the **Pen**, for example, indicate your capture preference (by clicking on either the **Partial**, **Window**, or **Screen** option in the dialog), and annotate the captured image.

Use the **Page Creation Tools** to add a blank, gridded, or background image page. By default, Interwrite Workspace is in Autosave mode, so your annotated pages are automatically saved as you build your presentation file.

Click the **Save** tool to save the file using the default filename (current date), or a name you type on the pop-up Onscreen Keyboard.



Distributing Presentation Files

The Interwrite Workspace presentation files you create can be printed for local distribution, or emailed to anyone, anywhere.

Use the **Page Sorter** tool to review the presentation file. The pages in the presentation file can be sorted, moved, duplicated, merged, and deleted using the Page Sorter tool. When the file pages have been arranged to your satisfaction, you can use Page Sorter's export option to export it to one of a number of file formats, or you can close Page Sorter and select an option from the Workspace File Menu.

The native file format of saved presentation files has the *.GWB* extension. *GWB* files can be read on any computer on which Interwrite Workspace is installed. For general distribution, we recommend exporting the presentation file to the *PDF* format using the Export PDF File tool located in the Toolbox, or by selecting the the Export PDF File option from the Workspace File Menu.

Now everyone can stay in the information loop, whether they were able to attend the presentation or not.

Additional Interwrite Learning Resources

We invite you to visit the Interwrite Learning Web site at

www.InterwriteLearning.com

where we have provided a variety of resources to help make your Interwrite Workspace experience more rewarding. We especially encourage you to visit

www.InterwriteLearning.com/support_interwrite.htm

and

www.InterwriteLearning.com/erc/index.htm.

What is PRS?

Interwrite PRS is an Audience Response System—a comprehensive response system for electronically testing, polling, and surveying a group of people. It can be used in conjunction with Interwrite Workspace to take a survey of the audience response to the presentation, or to test the level of comprehension after a lesson presentation, for example. Learn more about PRS by visiting our Web site.



Regulatory Statements

These devices comply with part 15 of the FCC Rules and with RSS-210 of Industry Canada. Operation is subject to the following two conditions:

- 1 These devices may not cause harmful interference, and
- 2 These devices must accept any interference received, including interference that may cause undesired operation.

Note: This equipment has been tested and found to comply with the limits of a Class B digital device, pursuant to Part 15 of the FCC rules.

These limits are designed to provide reasonable protection against harmful interference in a residential installation. This equipment generates, uses and can radiate radio frequency energy and, if not installed and used in accordance with the instructions, may cause harmful interference to radio communications. However, there is no guarantee the interference will not occur in a particular installation.

If this equipment does cause harmful interference to radio or television reception, which can be determined by turning the equipment off and on, the user is encouraged to try to correct the interference by one or more of the following measures.

- Reorient or relocate the receiving antenna.
- Increase the separation between the equipment and the receiver.
- Connect the equipment into an outlet on a circuit different from that to which the receiver is connected.
- Consult the dealer or an experienced Radio/TV technician for help.

The radiated output power is far below the FCC Radio Frequency exposure limits. Nevertheless, each of the devices should be used in such a manner that the potential for human contact during normal operation is minimized.

Canada

Industry Canada Class B emission compliance statement. This Class B digital apparatus complies with Canadian ICES-003.

Avis de conformité à la réglementation d'Industrie Canada. Cet appareil numérique de classe B est conforme à la norme NMB-003 du Canada.

Declaration of Conformity

The “CE” mark on this device indicates compliance under the EMC 89//336/EEC Directive.

Declaration of conformity according to ISO/IEC Guide 22 and EN 45014

Manufacturer’s Name: GTCO Corp. (dba Interwrite Learning)
Manufacturer’s Address: 8224 East Evans Road
Scottsdale, AZ 85260 U.S.A.

declares, that the product

Product Name: Interwrite Pad
Model Number: 400
Product Options: All

conforms to the following product specifications:

EMC: ETSI EN 301 489-1/2000
EN 55022/1998 CLASS B
CISPR 22(1997) CLASS B
EN 61000-4-2/1995
EN 61000-4-3/1995
EN 61000-4-4/1995
EN 61000-4-5/1995
EN 61000-4-6/1996
EN 61000-4-11/1994
EN 61000-3-2/1995
EN 61000-3-3/1995
Safety: EN60950-1:2002
RoHS: “-R” labelled products conform to DIRECTIVE
2002/95/EC. These products are RoHS-compliant.

Supplementary Information

The product herewith complies with the requirements of the Low Voltage Directive 73/23/EEC and the EMC Directive 89/336/EEC.

Scottsdale, Arizona, U.S.A.

Location

6-1-2006

Date

Dana Doubrava

Engineering Mgr

Dispositif à faible puissance (1 mW), pas de limitation pour son usage à l’intérieur ou à l’extérieur.

Low power device (1 mW), no limitation for indoor or outdoor use. This product is suitable for indoor use only.



The Interwrite Pad, assembled by Interwrite Learning, contains the Bluetooth® Serial Module BISM II, #B02456, FCC ID: PI401B, from Ezurio Ltd. Their Declarations of Conformity are included here. The BTCOM2 Module, USB Adaptor II, and PCMCIA Card II are RoHS-compliant.



Declaration of Conformity

In accordance with Annex IV of the EU directive 1999/5/EC

Notified Body consulted: **Phoenix Test-Lab**

ID-Number of Notified Body: **0700**

declare under our responsibility that the **BISM II Module**

complies with the appropriate essential requirements of the Article 3 of the R&TTE and the other relevant provisions, when used for its intended purpose.

Health and Safety requirements contained in Article 3 (1) a)

EN 60 950: 1992 Safety of information technology equipment + Amendment A1:1993, Amendment A2:1993, Amendment A3:1995, Amendment A4:1997, Amendment A11:1997

EN 50371: Generic standard to demonstrate the compliance of low-power electronic and electrical apparatus with the basic restrictions related to human exposure to electromagnetic fields (10 MHz - 300 GHz) - General public Protection requirements with respect to electromagnetic compatibility Art.3 (1) b)

EN 301489-17 V1.1.1 (09-2000), Electromagnetic Compatibility and radio spectrum Matters (ERM); Electro Magnetic Compatibility (EMC) standard for radio equipment and services; Part 17: Specific conditions for wideband Hiperlan equipment

Means of the efficient use of the radio frequency spectrum

EN 300328-2 V1.2.1 (11-2001), Radio Equipment and Systems (RES); Wideband transmission systems; Technical characteristics and test conditions for data transmission equipment operating in the 2,4 GHz ISM band and using spread spectrum modulation techniques. Part 2: Harmonized EN covering essential requirements under article 3(2) of the R&TTE directive.

Ezurio Ltd
Unit 2, 126 Colindale Avenue, Colindale
London NW9 5HD, United Kingdom

tel: +44 (0)20 8938 1000
fax: +44 (0)20 8905 8608
www.ezurio.com

Registered in England
No. 5178293

Safety Information

Switch off the Bluetooth device before boarding an aircraft. Make sure it cannot be switched on inadvertently. The operation of wireless appliances in an aircraft is forbidden by many airlines to prevent interference with communications systems. Applications that could result in use on aircraft should carry appropriate warnings.

Declaration of Conformity

Manufacturer's Name: Lih Rong_Electronics co., LTD
Manufacturer's Address: Hsin Chuang City, Taipei
Taiwan, R.O.C.
Importer's Name: GTCO CalComp GmbH
Importer's Address: Kreillerstrasse 24
Munich 81673 Germany

declares, that the product

Product Name: Bluetooth USB Adapter
Model Number: BTA-6030R

conforms to the following product specifications:

EMC: EN301489-1 v1.5.1(2004-11)
EN301489-17 v1.2.1(2002-08)
ETSI EN 300 328 V1.6.1 (2004-11)

Safety: EN60950-1:2001
IEC60950-1:2001

RoHS: "-R" labelled products conform to DIRECTIVE
2002/95/EC. These products are RoHS-compliant.

following the provisions of Council Directive 89/336/EEC (EMC
Directive) and Council Directive 73/23/EEC (Low Voltage Directive)
where applicable

Place and Date: Taipei, Taiwan 07/17/2007
Authorized Person: Raymond Wang
Title: QC Manager



EZURIO

Declaration of Conformity

In accordance with Annex IV of the EU directive 1999/5/EC

Notified Body consulted:

Phoenix Test-Lab

ID-Number of Notified Body:

0700

declare under our responsibility that the **Ezurio Bluetooth PC Card II**

complies with the appropriate essential requirements of the Article 3 of the R&TTE and the other relevant provisions, when used for its intended purpose.

Health and Safety requirements contained in Article 3 (1) a)

EN 60 950: 1992 Safety of information technology equipment + Amendment A1:1993, Amendment A2:1993, Amendment A3:1995, Amendment A4:1997, Amendment A11:1997

EN 50371: Generic standard to demonstrate the compliance of low-power electronic and electrical apparatus with the basic restrictions related to human exposure to electromagnetic fields (10 MHz - 300 GHz) - General public

Protection requirements with respect to electromagnetic compatibility Art.3 (1) b)

EN 301489-17 V1.1.1 (09-2000), Electromagnetic Compatibility and radio spectrum Matters (ERM); Electro Magnetic Compatibility (EMC) standard for radio equipment and services; Part 17: Specific conditions for wideband Hiperlan equipment

Means of the efficient use of the radio frequency spectrum

EN 300328-2 V1.2.1 (11-2001), Radio Equipment and Systems (RES); Wideband transmission systems; Technical characteristics and test conditions for data transmission equipment operating in the 2,4 GHz ISM band and using spread spectrum modulation techniques. Part 2: Harmonized EN covering essential requirements under article 3(2) of the R&TTE directive.

Ezurio Ltd
Unit 2, 126 Colindale Avenue, Colindale
London NW9 5HD, United Kingdom

tel: +44 (0)20 8938 1000
fax: +44 (0)20 8905 8608
www.ezurio.com

Registered in England
No. 5178293

Japan

この装置は、情報処理装置等電波障害自主規制協議会（VCCI）の基準に基づくクラスB 情報技術装置です。この装置は、家庭環境で使用することを目的としていますが、この装置がラジオやテレビジョン受信機に近接して使用されると、受信障害を引き起こすことがあります。

取扱説明書に従って正しい取り扱いをして下さい。



The Electronic Interwrite Pen

This device complies with Part 15 of FCC rules and with RSS-210 of Industry Canada. Operation is subject to the following two conditions: (1) This device may not cause harmful interference, and (2) This device must accept any interference received, including interference that may cause undesired operation.

The radiated output power is far below the FCC Radio Frequency exposure limits. Nevertheless, this device should be used in such a manner that the potential for human contact during normal operation is minimized.

WARNING: Changes or modifications made to this equipment not expressly approved by Interwrite Learning may void the FCC authorization to operate this equipment.

Battery Handling and Precautions

- Always charge batteries prior to first use.
- Never short-circuit batteries or reverse polarity.
- Do not incinerate or dismantle batteries. Cell components are corrosive and may be harmful to skin and eyes.
- Do not pull on battery lead wires or connectors. Excessive force on the leads or connectors can damage the welding joints and other connections.
- Do not mix with other battery types. It could cause leaks, or an explosion, resulting in personal injury.
- Dispose of properly.
- Replace only with the same or an equivalent battery type recommended by Interwrite Learning, P/N 11-00667-01.

Manipulation de la batterie et précautions

- Chargez toujours la batterie avant la première utilisation.
- Ne court-circuitez jamais une batterie et n'en inversez jamais les polarités.
- N'incinerez pas et ne démontez pas la batterie. Leurs cellules sont corrosives et présentent un risque pour la peau et les yeux.
- Ne tirez pas sur les fils métalliques de la batterie ni sur ses connecteurs. Une pression excessive sur les fils ou les connecteurs risque d'endommager les joints et les autres connexions.
- N'utilisez pas en conjonction avec d'autres types de batterie. Vous risquez de provoquer des fuites ou une explosion pouvant occasionner des blessures corporelles.
- Mettez la batterie au rebut de manière adéquate.
- Remplacez-la uniquement par une batterie identique ou de type équivalent recommandée par Interwrite Learning, Réf. 11-00667-01.



Handhabung des Akku und Vorsichtsmaßnahmen

- Laden Sie den Akku vor dem ersten Gebrauch stets auf.
- Schließen Sie den Akku niemals kurz und verändern Sie niemals seine Polarität.
- Verbrennen und demontieren Sie keine Akkus. Bestandteile des Akku sind ätzend und können schädlich für Haut und Augen sein.
- Ziehen Sie nicht an Akkuanschlussdrähten oder Anschlussklemmen. Übermäßige Kraftanwendung an Anschlussdrähten oder -klemmen kann die Schweißpunkte und andere Verbindungen beschädigen.
- Benutzen Sie den Akku nicht zusammen mit anderen Batterien. Dies könnte ein Auslaufen oder eine Explosion verursachen, was Personenschäden zur Folge haben könnte.
- Entsorgen Sie den Akku ordnungsgemäß.
- Ersetzen Sie den Akku nur mit dem gleichen oder einem gleichwertigen Batterietypen, der von Interwrite Learning, P/N 11-00667-01 empfohlen wird.

Gestione e precauzioni relativi alla batteria

- Caricare le batterie sempre prima del primo utilizzo.
- Non cortocircuitare mai le batterie o invertire la polarità.
- Non incenerire o smontare le batterie. I componenti degli elementi sono corrosivi e possono essere nocivi alla pelle ed agli occhi.
- Non tirare i fili conduttori o i connettori della batteria. Una forza eccessiva sui conduttori o connettori può danneggiare i giunti saldati ed altri collegamenti.
- Non mescolare con altri tipi di batteria. Potrebbe causare perdite o un'esplosione, avendo come conseguenza lesioni a persone.
- Smaltire la batteria secondo le normative.
- Sostituire solo con lo stesso tipo, o un tipo equivalente, di batteria consigliato da Interwrite Learning, N/P 11-00667-01.

Precauciones y manipulación de baterías

- Cargue siempre las baterías antes de utilizarlas por primera vez.
- Nunca ponga en cortocircuito baterías o invierta la polaridad.
- No incinere o desmonte las baterías. Los componentes de la celda son corrosivos y pueden producir lesiones en la piel y los ojos.
- No tire de los cables conductores de la batería ni de los conectores. Ejercer exceso de fuerza en los cables conductores o en los conectores puede dañar las uniones soldadas u otras conexiones.
- No intercambie con otros tipos de baterías. Podría producir fugas, explosión o causar heridas graves.
- Desheche las baterías adecuadamente.
- Sustituya sólo con baterías del mismo tipo o equivalentes recomendadas por Interwrite Learning, P/N 11-00667-01



European Union Emission Directive

This product is in conformity with the protection requirements of EU Council Directive 89/366/ECC on the approximation of the laws of the Member States relating to electromagnetic compatibility.

This product has been tested and found to comply with the limits for Class A Information Technology Equipment according to CISPR 22/European Standard EN55022. The limits for Class A equipment were derived for typical industrial environments to provide reasonable protection against interference with licensed communication devices.

European Union WEEE Directive

The manufacture of this equipment required the extraction and use of natural resources. It may contain hazardous substances that could impact health and the environment.

- In order to avoid the dissemination of the hazardous substances into the environment and to diminish the pressure on our natural resources, we encourage you to return this product to the appropriate take-back system facility. These facilities reuse or recycle most of the materials in this equipment in a responsible way.
- The crossed-out wheeled bin symbol below invites you to use these take-back systems.
- If you need more information about the collection, reuse and recycling systems in your area, please contact your local or regional waste authority.
- Further information about the responsible end-of-life management of this and other Interwrite Learning products is available on our Web site at

www.InterwriteLearning.com.



European Contact:

Interwrite Learning
A Division of GTCO CalComp GmbH
European Headquarters
Kreiller Strasse 24
81673 Munich
Germany
Tel: +49 (0) 89 370012-0
Fax: +49 (0) 89 370012-12

Limited Warranty for the Interwrite Pad

Interwrite Learning warrants these products to be free from defects in material and workmanship under the following terms. Complete and return the enclosed warranty registration card to ensure that your products are covered by this warranty.

Coverage

Parts and labor are warranted for one (1) year from the date of the first consumer purchase for the Interwrite Pad, electronic Pen, Pad Charger, and accessories. This warranty applies to the **original consumer purchaser only**.

Within the European Union, the warranty period is two (2) years, as mandated by the EU. Contact your local dealer or distributor for additional warranty information.

Warranty is valid only if original consumer's purchase or lease date is less than or equal to six months from the original Interwrite Learning sale date. This information will be captured by the system serial number and confirmed by the reseller's purchase order.

A nominal Warranty Handling Fee will be charged after the first 90 days of use and calculated from the date of original consumer purchase. This payment may be made by Visa, MasterCard, or American Express. A copy of the sales receipt or invoice will be required for warranty verification.

Conditions

Except as specified below, this warranty covers all defects in material or workmanship in the products. The following are not covered by the warranty:

1. Any product on which the serial number has been defaced, modified, or removed (if applicable).
2. Damage, deterioration, or malfunction resulting from:
 - a. Accident, misuse, abuse, neglect, fire, water, lightening, or other acts of nature, unauthorized product modification for any purpose, or failure to follow instructions supplied with the product.
 - b. Repair, or attempted repair, by anyone not authorized by Interwrite Learning.
 - c. Any damage in shipment of the product (claims must be presented to the carrier).
 - d. Any other cause which does not relate to a manufacturing defect.
3. Any product not sold or leased to a consumer within six months of Interwrite Learning's original sale date.
4. Consumable parts, e.g., batteries, dry-erase markers, eraser felt.

Interwrite Learning will pay all labor and material expenses for covered items, but will not pay for the following:

1. Removal or installation charges.
2. Costs for initial technical adjustments (set up), including adjustments of user controls.
3. Certain shipping charges. (Payment of shipping charges is discussed in the next section of this warranty.)
4. Packaging costs. (Customers should keep their boxes.)

Warranty Service Procedures

1. To obtain service on your Interwrite Learning product, contact the Technical Support Department to receive a Return Material Authorization Number (RMA#) and shipping instructions by calling:
In United States: (480) 443-2214 (MST)
In Europe: +49 (0) 89 370012-0 (CET)
2. Ship the product to Interwrite Learning with the RMA# marked clearly on the outside of the box. Interwrite Learning reserves the right to refuse the shipment, if not properly marked.
3. Although the consumer must pay any shipping charges to ship the product to Interwrite Learning for warranty service, Interwrite Learning will pay the return shipping charges for ground shipment. Other shipping options are available at an additional fee.
4. Whenever warranty service is required, the original dated sales invoice (or a copy) must be presented as proof of warranty coverage, and should be included in shipment of the product. In addition, please include your name, address, telephone number, fax number, email address, and a description of the problem.
5. If Interwrite Learning determines that the unit is not defective within the terms of the warranty, the consumer shall pay the cost of all freight charges, as well as any repair charges.

Technical Support

Web-based Technical Support is available free of charge at: www.InterwriteLearning.com, where current driver releases, as well as comprehensive technical support, troubleshooting, Technical Bulletins and FAQs can be found.

Telephone Technical Support is available free of charge to the original consumer for a period of 90 days from the date of purchase of the product. Please contact our Technical Support Department:

In United States: (480) 443-2214 (MST)
In Europe: +49 (0) 89 370012-0 (CET)

You can also fax your request to:

In United States: (480) 948-5508 (MST)
In Europe: +49 (0) 89 370012-12 (CET)

Our toll-free number in the U.S. is: 800-856-0732 (MST)

Disclaimer of Unstated Warranties

The warranty printed above is the only warranty applicable to this purchase. ALL OTHER WARRANTIES, EXPRESSED OR IMPLIED, INCLUDING, BUT NOT LIMITED TO, THE IMPLIED WARRANTIES OF MERCHANTABILITY AND FITNESS FOR A PARTICULAR PURPOSE ARE DISCLAIMED. Assuming the warranty above stated is otherwise applicable, it is expressly understood and agreed that Interwrite Learning's sole liability, whether in contract, tort, under any warranty, in negligence, or otherwise, shall be for the repair or replacement of the defective parts, and under no circumstances shall Interwrite Learning be liable for special, indirect, or consequential damages. The price stated and paid for the equipment is a consideration in limiting Interwrite Learning's liability.

Notice

Some states and provinces do not allow the exclusion or limitation of incidental or consequential damages, so the above exclusion may not apply to you. This warranty gives you specific legal rights, and you may have other rights, which vary from state to state, or province to province.

To obtain service on your Interwrite Learning product, call our Technical Support Department at (480) 443-2214 (MST), or fax us at (480) 948-5508 (MST); in Europe call +49 (0) 89 370012-0 (CET), or fax us at +49 (0) 89 370012-12 (CET).

We can also be contacted through our Web site at www.InterwriteLearning.com (in US), at EUOffice@gtcocalcomp.com (in Germany), or at infos@calcomp.fr (in France).

Important! All products returned to Interwrite Learning for service must have prior approval in the form of a Return Merchandise Authorization Number (RMA#), which can be obtained by calling the Technical Support Department.



Corporate Headquarters

7125 Riverwood Drive
Columbia, Maryland 21046
Tel: 410.381.6688
Fax: 410.910.0051
Sales: 866.496.4949

Western Office

8224 East Evans Road
Scottsdale, Arizona 85260
Tel: 480.948.6540
Support: 480.443.2214
Fax: 480.948.5508

European Headquarters

Interwrite Learning
A Division of GTCO CalComp GmbH
Kreiller Strasse 24
81673 Munich
Germany
Tel: + 49 (0) 89 370012-0
Fax: + 49 (0) 89 370012-12

www.InterwriteLearning.com

Support: 480.443.2214



Copyright© 2007 Interwrite Learning™

Interwrite Learning and Interwrite are trademarks of GTCO Corp.
Bluetooth is a trademark of, and is owned by, Bluetooth SIG, Inc., U.S.A.,
and is licensed to Interwrite Learning.
All other products and company names are the trademarks or registered
trademarks of their respective owners.

The information contained in this document is subject to change without notice. Interwrite Learning assumes no responsibility for technical, or editorial errors, or omissions that may appear in this document, or for the use of this material. Nor does Interwrite Learning make any commitment to update the information contained in this document. This document contains proprietary information which is protected by copyright. All rights reserved. No part of this document can be photocopied or reproduced in any form without the prior, written consent of Interwrite Learning.